

## Original Research Article

# Scanning Electron Microscopic observations of Rumen Amphistome (Trematoda) in buffalo (*Bubalus bubalis*) in Udaipur, Rajasthan

G.Swarnakar<sup>1\*</sup>, A. Kumawat<sup>2\*</sup>, B. Sanger<sup>1</sup>, K. Roat<sup>1</sup>, H.Goswami<sup>1</sup> and RN.Damor<sup>1</sup>

<sup>1</sup>Parasitology Lab, P.G. Department of Zoology, Government Meera Girls College, Udaipur (Raj.), India

<sup>2</sup>PAHER University, Udaipur (Raj.), India

\*Corresponding author

## ABSTRACT

The amphistomes *Cotylophoron cotylophorum* and *Orthocoelium scoliocoelium* (Trematodes) was studied by using a scanning electron microscope (SEM). Adult worms were collected from rumen of freshly slaughtered buffalo (*Bubalus bubalis*). Observations demonstrated that the *Cotylophoron cotylophorum* has conical pyriform body and *Orthocoelium scoliocoelium* has small stumpy, oval, slightly curved body at the ventral side. In *Cotylophoron cotylophorum* oral opening is terminal and surrounded by wrinkled and ridged tegument which forms concentric elevated rings encircling the oral opening. Acetabulum is sub terminal and the tegument covering outer border of the sucker is smooth whereas the inner lining of the acetabular tegument is rough in a bee- comb like structure. In *Orthocoelium scoliocoelium* oral sucker in circular form present anterior sub terminal region having 7-8 concentric rings of tegumental folds and ventral sucker are also in circular form and present in posterior extremity known as acetabulum. *Cotylophoron cotylophorum* has mid ventral genital sucker found first third of the body and surrounded by a tire- shaped elevation of the tegument. Whereas in *Orthocoelium scoliocoelium* genital sucker is absent but genital papillae is present and situated at ventral region on anterior middle position. Here the tegumental folds are arranged in radial pattern and some papillae are also visible here. Based on these results, we can use morphological characters for the species differentiation for the future. SEM study of *Cotylophoron cotylophorum* and *Orthocoelium scoliocoelium* will be helpful in identification and taxonomic characterization. Due to this parasites have been received special attention to study the ultrastructural, adaptive features and functions of worms.

## Keywords

Amphistomes, *Cotylophoron cotylophorum*, *Orthocoelium scoliocoelium*, *Bubalus bubalis* and scanning electron microscope.

## Introduction

Amphistomes are digenetic trematodes parasite found in domestic as well as wild ruminants and causes severe pathogenicity

in cattle and indirectly responsible for massive economic losses to the cattle farmers. These worms are small, stumpy

body shape having two or more suckers. Yamaguti (1971) has listed 62 species of paramphistomes in the ruminants of various countries of the world whereas Dinnik (1964) recorded 32 species in Africa. In India 20 species were described and classified by Dutt (1980). Paramphistomiadae family includes worms which are endo-parasites of digestive tract and other visceral organs of mammalian hosts having different genera and species. All the paramphistomes are differ in shape, size, number, size of suckers, cuticle, oral organ, oesophagus, intestinal caeca, excretory vesicle, genital bulb, male and female reproductive organs. The basic outline of the structure of paramphistomes comprises thick fleshy body with posterior acetabulum, terminal mouth without oral pouches, nonspinous cuticle, excretory pore is dorsal and either anterior or posterior to Laurer's canal.

The use of scanning electron microscope (SEM) magnifications has enable scientists to make more use of surface characters. Thus many characters are available for solving taxonomic problems. The surface topography of few digenean trematodes that are infected cattle and vertebrates were studied in past few decade: *Phyllodistomum conostomum* (Bakke and Lien 1978 & Bakke *et al.* 1982), *Fasciola hepatica* (Bennet, 1975 a and b), *Orthocoelium*, *Cotylophoron*, *Paramphistomum*, *Calicophoron* and *Gigentocotyle* *sps.* (Eduardo 1980b and c, 1983 & 1984), *Echinostoma revolutum* (Smales and Blankespoor 1984), *Concinnum epomopis* (Otubanjo, 1985), *Phyllodistomum umblae* (Bakke and Bailey 1987), *Paramphistomum epiclutum*, *Gastrothylax cruminifer*, *Orthocoelium* *sps* (Tandon and Maitra 1981, 1983 and 1987), *Gastrodiscooides hominis* (Tandon and Maitra 1983 and Brennen *et al.* 1991), *Zogocotyl lunata* (Irwin *et al.* 1991),

*Balanorchis anastrophus* (De Fatima *et al.* 1992), *Transversotrema licinum* (Abdul-Salam and Sreelatha 1992), *N. aegyptensis* (Shalaby and Hassanine 1996), *R. angusticolle*, *T. arripidis*, *B. belonae*, *P. sigani* (Shalaby and Hassanine 1997), *Cotylophoron cotylophorum* (Veerakumari and Munuswamy 1999 and Nahla *et al.*, 2012), *Glyianchen volubilis* (Lee *et al.* 1985 and Abdou 2000), *Stephanostomum egypticum* (Abdou and Ashour 2000), *Probolocoryphe uca* (Abdul-Salam and Sreelatha, 2000), *Allodidymozoon operculare*, *Didymocystoides singularis*, *Platocystoides polyester* (Sethukarasi and Veerakumari 2007), *Paramphistomum cervi* (Sharma and Hanna 1988; Payarachun *et al.* 2010; Shaheen & Eman 2012 and Saowakon *et al.* 2013).

Amphistomes *Cotylophoron cotylophorum* and *Orthocoelium scoliocoelium* are commonly occurring species severely infected ruminants of southern Rajasthan belong to sub-family Paramphistomatinae and Orthocoelinae respectively. The general characters of Paramphistomatinae are small, curved, conical or pyriform body with well-developed oral organ without pouches strongly developed posterior sub terminal acetabulum, distinct genital bulb, Laurer's canal opening posterior to excretory vesicle. The key characters of group of Orthocoelinae are generally small, slightly curved body, weakly developed acetabulum, and oral sucker without pouches, excretory vesicle not crossing the Laurer's canal, genital bulb small and parasite in alimentary tract of mammals (Yamaguti 1971; Dutt 1980; Tandon and Maitra 1987 and Tandon & Roy 2002).

In an epidemiological survey the prevalence of *Cotylophoron cotylophorum* in buffaloes was 61.60% and *Orthocoelium scoliocoelium* was 63.44% (Swarnakar *et al.*

2014). As the knowledge the detail SEM structure of *Cotylophoron cotylophorum* and *Orthocoelium scoliocoelium* is very little. Due to this parasites have been received special attention to study the ultrastructural, adaptive features and functions of worms. The present study is to determine the structure of *Cotylophoron cotylophorum* and *Orthocoelium scoliocoelium* by SEM, which will be helpful in identification and taxonomic characterization.

## Materials and Methods

Live amphistomes *Cotylophoron cotylophorum* and *Orthocoelium scoliocoelium* (Trematodes) were removed from the rumen of freshly slaughtered buffaloes at the local zoo abattoir and from various slaughtered shops of Udaipur. These parasites were washed several times in distilled water to make them free from debris and mucous. Then they were transferred into physiological saline (0.9% NaCl) for their maintenance. Then parasites were fixed 12 hrs at 4°C in 3.5% glutaraldehyde in 0.2M sodium cacodylate buffer at pH 7.2 fixative (Bancroft and Stevens, 1977). Further the worms were post fixed at 4°C for 1 hour in 1% osmium tetroxide prepared in 0.1 M phosphate buffer at pH 7.2 and dehydrated in acetone ascending series and then transferred to 100% acetone for one hrs. and dried. Later on the worms were fixed and glued on metal stubs, coated with gold in vacuum and examined by using ZEISS Scanning Electron Microscope (SEM).

## Results and Discussion

The SEM photomicrograph revealed that the body of adult *Cotylophoron cotylophorum* is beaned shaped with slightly corrugated surface. The oral opening is terminal and surrounded by wrinkled and ridged

tegument which forms concentric elevated rings encircling the oral opening. Acetabulum is sub terminal and the tegument covering outer border of the sucker is smooth whereas the inner lining of the acetabular tegument is rough in a becomb like structure (Fig. 1). The mid ventral genital sucker is found first third of the body and surrounded by a tire- shaped elevation of the tegument (Fig. 2).

The SEM observations demonstrated that the normal adult *Orthocoelium scoliocoelium* (*O. scoliocoelium*) has elongated oval and slightly ventrally curved body. The body of adult is dorsally convex and almost straight at ventral. It has two suckers; oral sucker in circular form present anterior sub terminal region and ventral sucker are also in circular form and present in posterior extremity known as acetabulum. The genital pore is situated in ventral side at the anterior third of the body. The ventral and lateral side of *O. scoliocoelium* reveal acetabulum, genital pore and tegumental folds (Fig.3). Everted genital papillae with radial tegumental folds and knob like papillae were observed on ventral surface of the worm (Fig. 4). The tegumental surface in both the amphistome is highly corrugated with transverse folds alternating with grooves and furrows and is spineless, which is exceptional character of trematodes.

Use of scanning electron microscopy is a very supportive instrument in the study of cellular structure of animal biology in general, thus enhances the knowledge of biologists. In trematodes parasites, all morphological structures are very important in the context of their systematic classifications. These characters includes; body contour, position and shape, size of oral and ventral suckers, presence of tegumental folds, ridges and furrows on the tegument, types of papillae present on

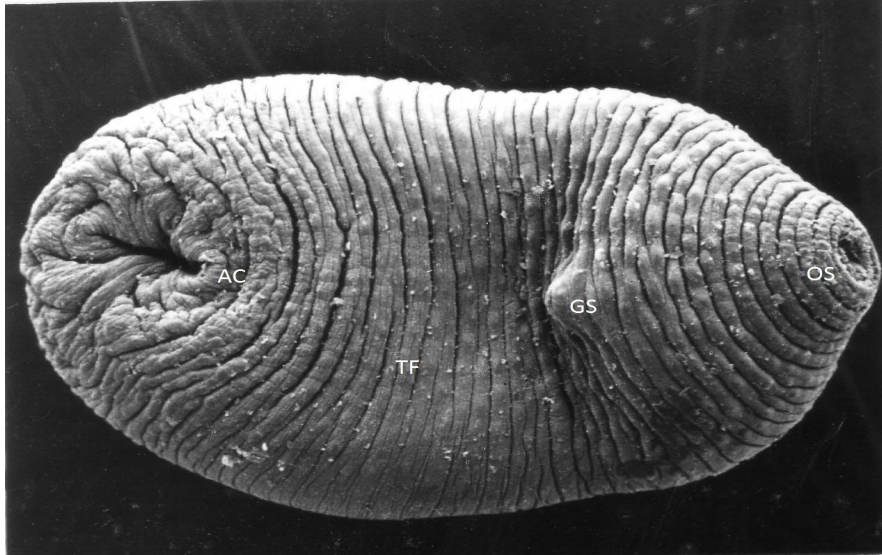
tegument and around suckers, tegumental structures like spines and holes. The importance of SEM lies in its ability to provide three dimensional images with high magnification that allow understanding the spatial relationships among surface structures. It could be used to separate species that appear morphologically identical when examined under light microscope, validate and demonstrate differences between species. The tegumental alteration and structures of digenetic trematodes are facilitate adaptive characters to the individual genus (Adibi *et al.* 1988). The tegument plays important role in protection, absorption, excretion, transport and osmoregulation. It is the surface which is in direct contact with host's tissue along with the body fluids (Otubanjo 1985; Sharma & Hanna 1988; Brennen *et al.* 1991; Panyarachun *et al.* 2010; Shaheen & Eman 2012 and Saowakon *et al.* 2013).

All the trematodes have species specific arrangement of tegumental folding, ridges and furrows. This character facilitates increased surface area for absorption and stretching capability. In present study, transversally arranged tegumental folds having prominent ridges and furrows were observed which shows similarity with other paramphistomes studied by scientists. Amongst other species of amphistome Tandon and Maitra (1987) reported broader grooves in the extreme ends of body and narrow grooves at the middle portion in *Orthocoelium dewasi*. Bakke (1978 and 1979) reported different types of hole on tegumental surface of *Leucochloridium sps.* Brennen (1991) documented rough, concentrically arranged tegumental folds with clearly visible ridges and furrows bearing numerous tightly packed tubercles and extended into the oral cavity in *Gastrodiscoides hominis* and in *Platocystoides polyester*, furrows and ridges radiating from central portion of dorsal

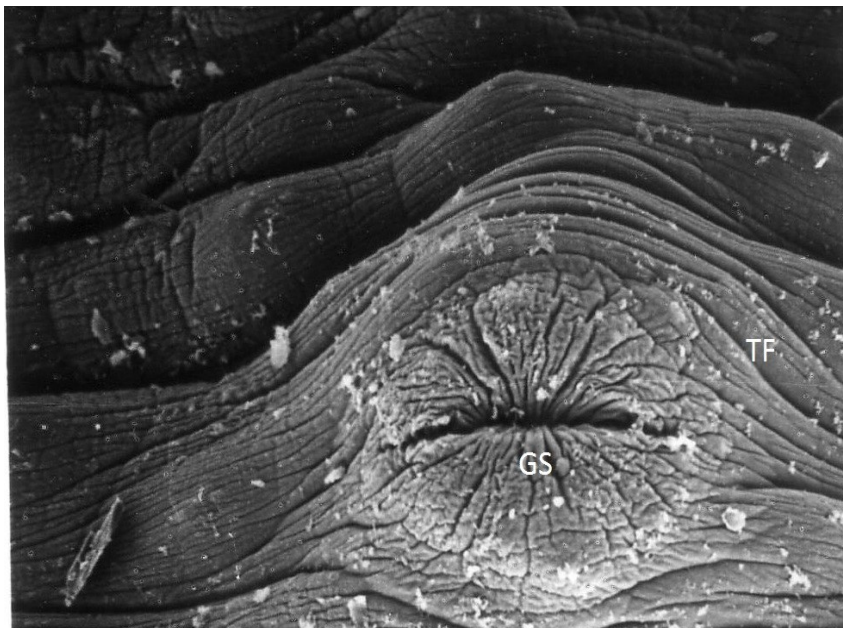
surface (Sethukarasi and Veerakumari 2007) and finger like projection of tegumental folds were observed in *Glyianchen volubilis* (Abdou 2000). The present research may indicate that the position of oral sucker, acetabulum and genital bulb tegumental folds are topographical characters which are considered as generalised taxonomic character of maximum trematodes. The present parasites *C. cotylophorum* and *O. scoliocoelium* are characterised by concentric arrangement of tegumental folds encircling oral sucker and less number is found near acetabulum and genital pore leads to the conclusion that these folds may be used in the site location within the host rumen and small intestine. This position brings them into contact with the plug of host tissue formed by the fluke at the attachment site (Hoole and Mickell 1981 and Ashour, 1994 & 1995).

The SEM study of *C. cotylophorum* and *O. scoliocoelium* revealed in present study shows similarity in few basic structures with many digeneans; *O. devasi*, *O. tamilansis* (Tandon and Maitra 1987), *N. aegyptensis* (Shalaby and Hassanine 1996), *R. angusticolle*, *T. arripidis*, *B. belonae*, *P. sigani* (Shalaby and Hassanine 1997), *P. interruptus* and *G. volubilis* (Abdou *et al.* 1999b and 2000), *Allodidymozoon operculare*, *Didymocystoides singularis*, *Platocystoides polyester* (Sethukarasi and Veerakumari 2007), *Paramphistomum cervi* (Payarachun *et al.* 2010) and the above finding shows that the species of *C. cotylophorum* and *O. scoliocoelium* inhabiting rumen of buffalo exhibit important variations in their surface ultrastructure. Diversity in the surface ultrastructure is significant with regards to the adaptation of the *C. cotylophorum*, *O. scoliocoelium*. Such studies on the other ruminant parasites are necessary because many of them are responsible to cause paramphistomiasis.

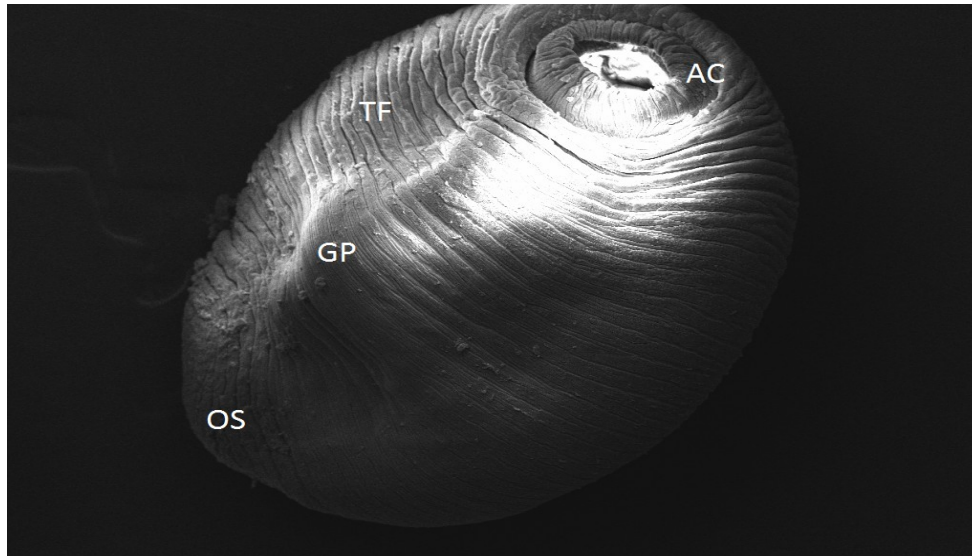
**Fig.1** SEM photomicrograph of ventral surface of *Cotylophoron cotylophorum* showing position of oral sucker (OS), genital sucker (GS), posterior sub-terminal acetabulum (AC) and tegumental folds (TF) x100µm



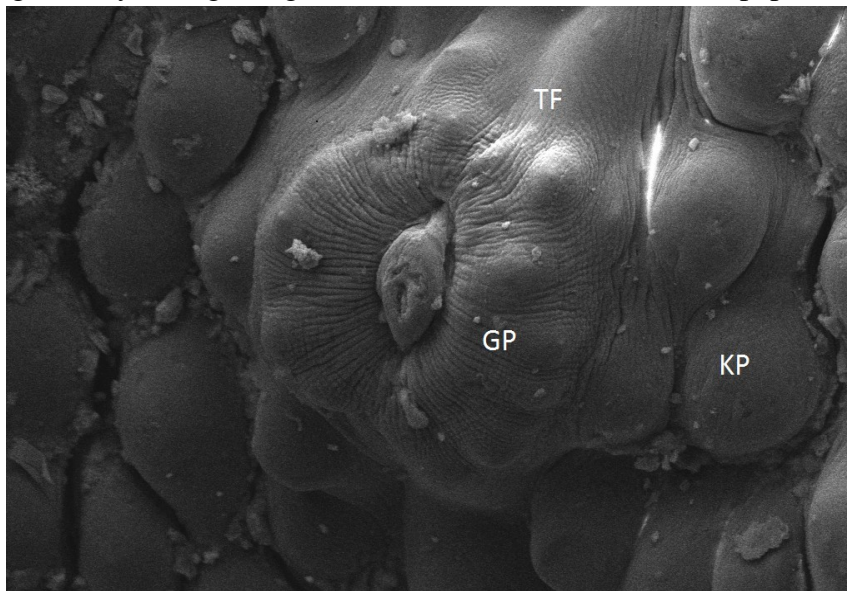
**Fig.2** SEM photomicrograph showing genital sucker (GS) and tire-shaped arrangement of tegumental folds (TF) x80 µm



**Fig.3** SEM photomicrograph of ventral surface of *Orthocoelium scoliocoelium* showing oral sucker (OS), genital papillae (GP), acetabulum (AC) and tegumental folds (TF) x100µm.



**Fig.4** SEM photomicrograph of genital papillae (GP) of *Orthocoelium scoliocoelium* having radially arranged tegumental folds (TF), and knob like papillae (KP) x80 µm



### Acknowledgement

The senior author is grateful to UGC, New Delhi for providing financial assistance as major research project File No: 42-505 / 2013 (SR) dated 22 March 2013 to carry

out research work. Authors are thankful to the Director, Regional Electron Microscopy Facilities, AIIMS, New Delhi for providing SEM facility.

## References

- Abdou El N, Heckmann A R, Beltagy M S and Ashour A A. 1999b. *Pseudoplagioporos interruptus* Durio and Manter, 1968 and *Hamacreadium agyptia* sp. n. (Trematoda: Opecoeliidae) from the Red sea fishes in Egypt. Second symposium on the Red sea marine environment. Faculty of Marine Science, King Abdouiz University. Kingdom of Saudi Arabia. 8- 10 November 1999.
- Abdou El N. 2000. Scanning electron microscopy of *Gyliauchen volubilis* Nagaty 1956, an intestinal trematodes of two species of the red sea fish. Journal of Union Arab Biology. 14A : 49-63.
- Abdou EL N and Ashour A A. 2000. Scanning electron microscopy of the tegumental surface of digenetic trematodes *Stephanostomum egypticum* from the red sea fishes. Journal of Egyptian Society of Parasitology. 30(1): 341-348.
- Abdou El N. 2001. Surface topography of *Erilepturus hamati*, Manter, 1947 (Digenea, family: Hemiuridae) by scanning electron microscopy. Journal of Egyptian Society of Parasitology. 31(1): 199-212.
- Abdul-Salam J and Sreelatha B S. 2000. Surface morphology of *probolocoryphe uca* (Sarkisian, 1957) (Digenea: Microphallidae) from Kuwait bay. Systematic Parasitology. 46(3): 209-214.
- Abidi S M A, Ahmad M, Nizami W A and Hanna R E B. 1988. *Clinostomum complanatum*: Tegumental surface changes during *in vivo* development. International Journal of Parasitology. 18: 433-439.
- Ashour AA, El-Alfy NM and Wanas MQ. 1994. An ultrastructural investigation on the body surface of *Diplodiscus pallascatus* from the toad *Bufo regulates* from Egypt. Egyptian Journal of Medicinal Science. 15 : 567-572.
- Ashour A A. 1995. Scanning Electron Microscope observation on *Corrigia vitta* (Dujardin, 1984) Shtrom, 1940 (Trematoda: Dicrocoelidae). Journal of Egyptian Society of Parasitology. 25(1): 25-30.
- Bakke A and Bailey R E. 1987. *Phyllodistomum umblae* (Fabricius) (Digenea: Gorgoderidae) from British Columbia *samonids*: a description based on light and Scanning Electron Microscopy. Canadian Journal of Zoology. 65: 1703-1712.
- Bakke T A and Lien L. 1978. The tegumental surface of *Phyllodistomum conostomum* (Olssen, 1876) (Digenea) revealed by scanning electron microscopy. International Journal of Parasitology. 8: 155-161.
- Bakke T A. 1979. Functional morphology and surface topography of *Leucochloridium* sp. (Digenea) revealed by scanning electron microscope. Z. Parasitknd. 51: 115-128.
- Bakke T A. 1982. The morphology and taxonomy of *Leucochloridium variaie micintosh* (Digenea: Leucochloridiidae) from the neo arctic as revealed by light and scanning electron microscopy. Zoological Science. 11: 87-100.
- Bancroft J D and Steven A. 1977. Theory and practice of histological techniques. Churchill Livingstone. Medical Division of Longman Group Limited. Edinburgh London and New York.
- Bennet C E. 1975a. Surface features, sensory structures and movement of the newly encysted juvenile *Fasciola hepatica*. Journal of Parasitology. 61: 886-891.
- Bennet C E. 1975b. Scanning electron microscopy of *Fasciola hepatica* L. during growth and maturation in mouse. Journal of Parasitology. 61:

- 892- 898.
- Brennen G P, Hanna R E B and Nizami W A. 1991. Ultrastructural and histochemical observations on the tegument of *Gastrodiscoides hominis* (Paramphistoma: Digenea). International Journal of Parasitology. 21: 897-905.
- De Fatima M, Baptists- Farias D, Kohn A and Miguens F C. 1992. Report of *Balanorchis anastrophus* in Para state with surface topography by Scanning Electron Microscopy. Mem. Inst. Oswaldo Cruz, Rio de Janerio. 87: 31-35.
- Dinnik J A.1964. Intestinal paramphistomiasis and *Paramphistomum microbothrium* Fiscoeder in Africa. Bullatine of Epizoonotic Diseases of Africa. 12: 439-454.
- Dutt S C. (1980). Paramphistomes and paramphistomiasis of domestic ruminant in India. PAU Press, Ludhiana and published by the joint Director, Communication Centre, Punjab Agricultural University, Ludhiana.
- Eduardo S L. 1980b. *Orthocoelium indonesiense*, a new species of amphistome from ruminants in Indonesia. Systematic Parasitology. 1: 203-210.
- Eduardo S L. 1980c. A new genus *Leiperocotyle* for *Cotylophoron okapi* Leiper, 1935 and *C. congolense* Baer, 1936 and redescription of *C. okapi*. Systematic Parasitology.1: 255-263.
- Eduardo S L. 1983. The taxonomy of the family Paramphistomidae, Fiscoeder, 1901 with special reference to the morphology of species occurring in ruminants. II. Revision of the genus *Calicophoron*, Nasmak, 1937. Systematic Parasitology. 5: 25-79.
- Eduardo S L. 1984. The taxonomy of the family Paramphistomidae Fiscoeder, 1901 with special reference to the morphology of species occurring in ruminants. IV. Revision of the genus *Gigentocotyle* ,Nasmak, 1937 and elevation of the subgenus *Explanatum*, Fukui, 1929 to full generic status. Systematic Parasitology. 6: 3-32.
- Hoole D and Mitchell J B. 1981. Ultrastructural observations on the sensory papillae of juvenile and adult *Gorgoderina vitelliloba* (Trematoda: Gorgoderidae). International Journal of Parasitology. 11: 411-417.
- Irwin S W B, Mc Cloughlin T J J and Fried B. 1991. Scanning and Transmission Electron Microscopical observations on the tegument of excysted metacercariae and adults of *Zygocotyle lunata*. Journal of Helminthology. 65: 270-274.
- Lee S H, Hong S J, Chay J Y and Seo B S. 1985. Studies of the intestinal trematodes in Korean. XV. Tegumental ultrastructure of *Fibricola seoulensis* according to developmental stages. Seoul Journal of Medicine. 26: 52-63.
- Nahla R A, Amal I K and wahdan A E. 2012. In vitro Evaluation of anthelmintic activity of *Allium sativum* against adult *Cotylophoron cotylophorum* (Paramphistomidae).PUJ 5(2): 135-146.
- Otubanjo A O. 1985. Scanning electron microscopic studies of the body surface and external genitalia of a dicrocoeliid trematodes, *Concinnum epomopsis*, Sandground 1973. Z. Parasitenkd. 71: 495-504.
- Panyarachun B, Shobon P, Tinikul Y, Chotwiwatthanakun C, Anupunpisit V and Anuracpreeda P. 2010. *Paramphistomum cervi*: surface topography of the tegument of adult fluke. Experimental Parasitology. 125: 95-99.
- Saowakon N, Lorsuwannarat N, Changklungmoa N, Wanichanon C and Sobhon P. 2013. *Paramphostomum cervi*: the in vitro



- effect of plumbagin on motility, survival and tegument structure. *Experimental Parasitology*. 133(2): 179-186.
- Sethukarasi C and Veerakumari L. 2007. Scanning electron microscope studies on the surface topography of a few digeneans (Family: Didymozoidae). *Journal of Parasitic Diseases*. 31(2): 120-127.
- Shaheen H M and Eman K Bazh. 2012. Morphological response of *Paramphistomum cervi* to treatment with oxyclozanide and niclosamide in vitro. *Journal of Egyptian Veterinary Medicine Association*. 72(4): 561-564.
- Shalaby I M I and Hassanine R M E. 1996. *Neorilepturus aegyptensis* n. gen. n. sp. (Platyhelminthes, Trematoda, Digenea) from red Sea fishes; light and scanning electron microscopic description of the tegumental surface. *Journal of Egyptian General Society of Zoology*. 21: 89-106.
- Shalaby I M I and Hassanine R M E. 1997. *Progyliauchen sigani* n. gen. n. sp. (Trematoda, Digenea) from Red Sea fishes; as described by; Light and Scanning electron microscopy. *Journal of Egyptian General Society of Zoology*. 22(D): 15-27
- Sharma P N and Hanna R E. 1988. Ultrastructural study of the tegument of *Orthocoelium scoliocoelium* and *Paramphistomum cervi* (Trematoda: Digenea). *Journal of Helminthology*. 62: 331-343.
- Smales H R and Blankespoor H D. 1984. *Echinostoma revolutum* (Froelich 1802), Loose, 1899 and *Isthmiophora melis* (Schrunk, 1788) Luke, 1909 (Echinostomatinae, Digenea), Scanning electron microscopy of the tegumental surfaces. *Journal of Helminthology*. 58: 187-195.
- Swarnakar G, Kumawat A, Sanger B, Roat K and Goswami H. 2014. Prevalence of amphistome parasites (Trematoda: Digenea) in Udaipur of southern Rajasthan, India. *International Journal of Current Microbiology and Applied Sciences*. 3(4): 32-37.
- Tandon V and Maitra S C. 1981. Stereoscan observations on the surface topography of *Gastrothylax crumifer* (Creplin, 1847) Poirier, 1883 and *Paramphistomum epiclitum* Fiscoeder, 1904 (Trematoda: Digenea). *Journal of Helminthology*. 55: 231-237
- Tandon V and Maitra S C. 1983. Surface morphology of *Gastrodiscoides homonis* (Lewis et McConnel, 1876) Lieper, 1913 (Trematoda: Digenea) as revealed by scanning electron microscopy. *Journal of Helminthology*. 57: 339-342.
- Tandon V and Maitra S C. 1987. Scanning electron microscopy of the tegumental surfaces of some *Orthocoelium species* (Trematoda: Paramphistomata). *Helminthologica*. 24: 171-181.
- Tandon V and Roy B. 2002. SEM pictorial guide to Trematodes of Livestock and Poultry in India. Regency Publications, New Delhi.
- Veerakumari L and Munuswamy N. 1999. *In vitro* studies on the effect of some anthelmintics on *Cotylophoron cotylophorum* (Digenea: Paramphistomidae): a structural analysis. *Cytobios*. 98(387): 39-57.
- Yamaguti S. 1971. Synopsis of digenetic trematodes of vertebrates. Vol. I & II. Japan Keigaku Publishing Co. 1074.