

Original Research Article

<https://doi.org/10.20546/ijcmas.2020.910.444>

## Occurrence and Distribution of Coconut Diseases in Tamil Nadu, India

E. Rajeswari<sup>1\*</sup>, R. Ramjegathesh<sup>2</sup>, V. Sivakumar<sup>1</sup>, S. Praneetha<sup>1</sup>,  
L. Pugalendhi<sup>3</sup> and H. P. Maheswarappa<sup>4</sup>

<sup>1</sup>Coconut Research Station, Tamil Nadu Agricultural University, Aliyarnagar, India

<sup>2</sup>Rice Research Station, Tamil Nadu Agricultural University, Ambasamuthiram, India

<sup>3</sup>Horticultural College and Research Institute, Tamil Nadu Agricultural University,  
Coimbatore, India

<sup>4</sup>ICAR, Central Plantation Crops Research Institute, Kasaragod, Kerala, India

\*Corresponding author

### ABSTRACT

Coconut is an important plantation crop with many decades of life span ,suffers from numerous diseases incited by fungi ,bacteria, virus, viriod and phytoplasma leads to drastic reduction in yield. Roving survey was conducted in five major coconut growing districts of Tamil Nadu viz., Coimbatore, Tirupur, Theni, Tirunelveli and Kanyakumari districts during 2014- 2019 for assessing the incidence of important diseases of coconut .The fungal diseases viz., bud rot, basal stem rot, stem bleeding, leaf blight and leaf spot and phytoplasma disease viz., root (wilt) are the widely prevalent disease in these districts. The highest bud rot incidence of 7. 7% was observed in Pongallyoor village in Coimbatore district and basal stem rot incidence (35.29%) in Manupatti village, Tirupur district . The prevalence of stem bleeding was found to be sporadic and the high incidence of 12.0 % was observed in Therichanamkoppu village, Kanyakumari district. The highest mean district incidence of bud rot, basal stem rot and stem bleeding was registered in Tirupur district which were 1.40 %, 2.59% and 4.94 % respectively. The severity of leaf blight was more (32.0 PDI) in Thanthoni, village, Tirupur district and the leaf spot (25. 5 PDI) in Kaliapuram village, Coimbatore district and the district mean incidence of leaf blight was highest (20.19 PDI) in Tirupur district and leaf spot (10.1 PDI) in Theni district. The maximum incidence (37.25%) of root (wilt) was noted in Gudalore village, Theni district and the district wise average was high (21.1%) in Theni district. The state average of the surveyed district for bud rot, basal stem rot , stem bleeding, leaf blight, leaf spot and root (wilt) incidence ranged from 0.09- 0.60%, 0.44- 1.03 % , 0. 1 - 1.05% 4.9 - 8.52 PDI, 2.55 to 6.55 PDI and 5.6- 10.3% respectively.

### Keywords

Coconut, Bud rot,  
Basal stem rot, Leaf  
blight, Root (wilt),  
Survey

### Article Info

Accepted:  
25 September 2020  
Available Online:  
10 October 2020

### Introduction

Coconut (*Cocos nucifera* Linn.) is an important plantation and perennial oil seed crop of India. It is called as Kalpavriksha or

Tree of Heaven or tree of Abundance, because each and every part of the coconut is useful to human being. Coconut farming offers livelihood security to millions of people across India and it provides improved

nutrition, employment and income generation as well. It supplies raw materials for coir industry and coconut shell is a good source of activated carbon. India is a primary coconut producing country with a production of 21288 million nuts from an area of 2150.89 thousand hectares with the productivity of 9897 nuts per hectare (CDB, 2018).

Though coconut palm is hardy in nature and adaptable to varied climatic conditions is affected by many diseases at various phases of its growth starting from seedlings to bearing stage (Hentry Louis, 2002). Among the diseases bud rot (*Phytophthora palmivora*), Thanjore Wilt (or) basal stem rot (*Ganoderma lucidum*), stem bleeding disease (*Thievoloopsis paradoxa*) leaf blight (*Lasiodiplodia theobromae*) and root wilt (*Candidatus phytoplasma*) are the major diseases of coconut in India (Snehalatharani, 2016). Yield loss up to 10 % and 13 % was reported due to bud rot and basal stem rot respectively (Nambiar and Rawther, 1993). Leaf blight and root wilt inflicts s yield loss ranged from 10- 25% and 35- 80% respectively (Jhonson *et al.*, 2014, Ramjagatheh *et al.*, 2019). The most e effective surveillance in plant health is highly imperative because of emergence of new pathogens and strains. Periodical survey on disease incidence helps to assess the general health of the palm, identification of hotspot area for a particular disease, developing forewarning disease models and to devise suitable management strategy.

Systematic measure on the intensity of diseases in different agro-ecological zone is foremost important to provide technical and official support to the farmers to prevent yield loss in coconut (Chandran *et al.*, 2017).With this in view the present investigation was carried out with a objective of assessing the occurrence and distribution of important diseases in major coconut growing districts of Tamil Nadu and to identify the endemic or

hot spot area.

## Materials and Methods

Roving survey was carried out in five districts of Tamil Nadu *viz.*, Coimbatore, Tirupur, Theni and Tirunelveli for the five years from 2014- 2019 (Figure 1) to assess the incidence of major diseases of coconut. In each district five blocks were selected and from each block seven villages comprising of 10 garden with minimum of 75 palms/ garden. From 75 palms 25 palms were selected randomly for assessing the disease incidence. A total of 175 villages were covered for each year. The diseases *viz.*, bud rot, basal stem rot and stem bleeding and root (wilt) incidences were assessed in terms of percentage. The observation recorded on disease incidence based on expression of characteristic symptoms of the respective disease. The per cent disease incidence was calculated using the formula

$$\text{Per cent disease incidence} = \frac{\text{Number of infected plants}}{\text{Total number of plants}} \times 100$$

The foliar diseases *viz.*, leaf blight and leaf spot were assessed by grading the individual leaflets. Twenty five leaflets from the lower 10 leaves in each palm selected at random and the disease was scored based on a score chart of 0–5 scale

<b>0</b>	-	<b>No infection</b>
<b>1</b>	-	< 10%;
<b>2</b>	-	11–25%
<b>3</b>	-	26–50%
<b>4</b>	-	51–75%
<b>5</b>		>75% leaf area infected

The per cent disease Index (PDI) was calculated based on the formula PDI = (Sum of numerical ratings/ Total number of leaves observed) × (100/Maximum disease grade).

## Results and Discussion

### Bud rot

Bud rot incited by *Phytophthora palmivora* causes rotting of spindle leaves and emits foul smell. Under favourable environmental condition the pathogen produces whitish fungal coating on the infected portion and secondary infection also occurs due to insect larvae. The central shoot comes off easily on slight pulling as the basal portion is dead Fig 2a, 2b, 2c and 2d.

Bud rot incidence was not observed in all the villages surveyed. The epidemic occurrence of disease was recorded during October to December especially in young palms of below 10 years old. The incidence of bud rot in individual coconut garden ranged from 0.0 - 7.7% and the highest incidence of 7.7% per cent was observed in Pongalliyoor village of Anamalai block during 2018 to 2019. In the village viz., Ammapettai, Bodinayakanur block, Theni district bud rot incidence of 6.15% was recorded (Table 1). The mean district incidence of bud rot in Coimbatore district varied between 0.01 – 1.01 percent and the high incidence (1.01%) was recorded during 2018-19. In Tirupur district the incidence ranged from 0.11 - 1.40 per cent and more incidence 1.40 percent was observed during 2015-16 and in Theni, Tirunelveli and Kanyakumari districts, average incidence of below one per cent was observed in all the five years of disease assessment (Table 2). The analysis of state average of the surveyed districts in Tamil Nadu revealed the mean incidence of bud rot was found to be more (0.60%) during 2018 - 19 and it was low (0.09%) during 2014- 15 (Table 5). This finding was supported by several studies. High incidence of bud rot disease was noted in Kuttiyadi area of Kozhikode (Prabha and Chandra Mohanan, 2009). Sharadraj and Chandra Mohanan (2013) observed severe

incidence of bud rot in four districts viz., Kasaragod, Kannur, Kozhikode and Wayanad, sporadic incidence in Coimbatore district of Tamil Nadu moderate level in East Godavari district of Andhra Pradesh. High rainfall, low temperature, high relative humidity and heavy circulating wind are favourable for the development and spread of the disease (Chandra Mohanan *et al.*, 2008)

### Basal stem rot

The causal agent of the disease is identified as *Ganoderma lucidum*. The infected palms exhibit yellowing, withering and drooping of the outer fronds. Reddish brown bleeding patches observed near the base of the trunk through cracks up to 3-5 meters height. Fruiting body (bracket) along the side of the basal trunk (Figure 3a, b, c, d).

Basal stem rot infection was mainly seen in the poorly maintained coconut garden. The results of the survey indicated that severe incidence was recorded in villages viz., Manupatti (35.29%), Erippalayam (25.17%), Udumalaipet block of Tirupur district (Table 1). The maximum district average of basal stem rot was observed in Tirupur district during 2014-15 (2.59%), 2015-16 (1.4%), 2016-17 (0.99%) and 2017-18 (1.0%) and in Coimbatore district (1.45%) during 2018-19 (Table 2). In Tamil Nadu, the state average of 1.03 per cent incidence was registered during 2014 – 15 and it was only 0.44 per cent during 2016 – 17 (Table 5). The disease was found to be a major limiting factor in coastal districts of Tamil Nadu and Andhra Pradesh (Srinivasulu 2001a). Bhaskaran and Ramanathan (1984) observed incidence more incidence of basal stem rot in Thanjavur district followed by Chingelput district and the incidence ranged from 0.6 to 4.9% and in severely infected gardens, the disease incidence was as high as 31.4%. Snehalatharani *et al.*, (2014a) assessed

occurrence of the disease during 2010-15 in different districts of Andhra Pradesh, Karnataka and Tamil Nadu and found the disease was major threat to coconut growers in all the three districts.. In Tamil Nadu, the maximum mean district incidence of (6.5%) was recorded in Thanjavur district followed by Nagapattinam and Thiruvarur.

### **Stem bleeding**

The causal organism of the disease is *Ceratocystis paradoxa*. The characteristic symptoms are exudation of reddish brown fluid from the cracks in the stem. Fluid trickles down to several feet on the stem and the exudates dries up forming a black crust (Figure 4) .

Stem bleeding incidence was not prevalent in all the villages and it was found to occur in a sporadic manner. From this survey the villages viz., Therichanamkoppu, Kanyakumari district Gudimangalam, Tirupur district were identified as a endemic area which registered the incidence of 12.0 and 10.80 per cent respectively(Table.1).The analysis of results on district average revealed that stem bleeding incidence was found to be high in Tirupur district during 2014-15 2015-16, 2017-18 and in Kanyakumari district during 2016-17 and 2018 -19(Table 2).In Tamil Nadu state average ranged from 0.1 - 1.05 per cent (Table 5).Stem bleeding of coconut is known to occur in nearly all the countries which grow coconut (Ohler, 1964) and serious infection was found to lead to reduced yield (Nambiar & Sastry, 1988). Wounds, poor drainage, formation of hard laterite pan leading to crippled root growth, imbalanced mineral nutrition are other predisposing factors (Sulladmath and Shantappa, 1980). The disease has been found to occur in all soil types, but more in laterite soils and sandy soils on seashore or backwater areas (Nambiar, 1994).

### **Leaf blight**

The disease is incited by *Lasiodiplodia theobromae* (Syn: *Botryodiplodia theobromae*) (Pat.) Symptoms are more conspicuous on lower fronds. The affected fronds, leaflets showed drying from tip downwards and exhibits a charred or burnt appearance leads to the reduction in photosynthesis.

Dark grey to brown lesions with wavy to undulated margins appear from the apex of the nuts. The fungus entered in to the kernel through mesocarp, resulting in a decay of the endosperm. The affected nuts were desiccated, shrunken, deformed and dropped prematurely (Figure 5 a, b) .

Leaf blight incidence was found to widely prevalent in all the villages of Coimbatore, Tirupur and Dindigul districts and the severity of the disease was comparatively low in Tirunelveli and Kanyakumari districts. In this survey Thanthoni, Sencherimaali and Karapadi of Tirupur district and Odayakulam and Kaliapuram villages of Coimbatore district were found to be endemic location for the disease (Table 1).

The highest district average of leaf blight incidence was recorded in Coimbatore district during 2017-18 (7.88 PDI)and 2018-19(12.76 PDI) and in Tirupur district during 2014-15 (20.19 PDI),2015-16(10.25 PDI) and 2016-17 (10. 19 PDI) (Figure 8). The state average of 8.52 PDI was registered during 2014-15 and it was declined to 4.9 PDI during 2017- 18 and again increased to 7.24 PDI during 2018 – 19 (Table 5).Similar results were reported by Jonson *et al.*, 2017 who reported that leaf blight is an emerging problem in Tamil Nadu and in recent years the disease is the spreading at a faster rate in Coimbatore, Erode, Dindigul and other districts of Tamil Nadu.

**Table.1** Endemic locations identified for various coconut diseases in Tamil Nadu

S.No	Disease	Year	Endemic location			DI/ PDI
			District	Blocks	Villages	
1.	Bud rot	2014- 15	Theni	Bodinayakanur	Ammapettai	6.15
		2015- 16	Tirupur	Udumalaipet	Pukkulam	4.68
		2016- 17	Tirupur	Pongalur	Kattur village	5.73
		2017 -18	Tirupur	Udumalaipeti	Mukonam	5.06
		2018 -19	Coimbatore	Anamaali	Pongalliyoor	7.70
2.	Basal stem rot	2014- 15	Tirupur	Udumalaipet	Manupatti	35.29
		2015- 16	Tirupur	Sultanpet	Vadavedampatti	12.00
		2016- 17	Tirupur	Udumalaipet	Erippalayam	25.17
		2017 -18	Tirupur	Sultanpet	Odakkalpalayam	12.0
		2018 -19	Kanyakumari	Thovalai	Therichananamkoppu	12.0
3.	Stem bleeding	2014- 15	Tirupur	Gudimangalam	Gudimanagalam	10.80
		2015- 16	Tirupur	Sulthanpettai	Odayakulam	3.54
		2016- 17	Tirupur	Pongalur	Karunkalipalayam	2.24
		2017 -18	Tirupur	Sultanpet	Vadavedampatti	4.80
		2018 -19	Kanyakumari	Thovalai	Therichananamkoppu	12.00
4.	Leaf blight	2014- 15	Tirupur	Dharapuram	Thanthoni	32.00
		2015- 16	Tirupur	Udumalai	Sencherimalai	26.45
		2016- 17	Tirupur	Gudimangalam	Karapatti	29.52
		2017 -18	Coimbatore	Anamalai	Odayakulam	26.0
		2018 -19	Coimbatore	Anamalai	Kaliapuram	25.5
5.	Leaf spot	2014- 15	Coimbatore	Anamalai	Avalchinampalayam	15.0
		2015- 16	Coimbatore	Anamalai	Aathupollachi	13.45
		2016- 17	Coimbatore	Anamalai	Angalakuruch	16.58
		2017 -18	Coimbatore	Pollachi North	Velliagoundanur	16.0
		2018 -19	Coimbatore	Anamalai	Kalliyapuram	25.4
6.	Root ( wilt)	2014- 15	Theni	Cumbum	Gudalore	25.28
		2015- 16	Theni	Cumbum	Gudalore	30.00
		2016- 17	Theni	Cumbum	Gudalore	34.70
		2017 -18	Theni	Cumbum	Gudalore	35.0
		2018 -19	Theni	Cumbum	Gudalore	37.25

**Table.2** Incidence of coconut bud rot in different districts of Tamil Nadu

Year	Bud rot (Disease Incidence %)				
	Coimbatore	Tirupur	Theni	Tirunelveli	Kanyakumari
<b>2014-15</b>	0.20	0.11	0.25	0.07	0.06
<b>2015-16</b>	0.96	1.40	0.37	0.17	0.08
<b>2016-17</b>	0.02	0.21	0.28	0.04	0.03
<b>2017-18</b>	0.01	0.12	0.15	0.05	0.04
<b>2018-19</b>	1.01	0.93	0.57	0.23	0.31



**Fig.1**

Fig. 1 Districts surveyed for the incidence of major diseases of coconut



**Table.3** Incidence of coconut basal stem rot in different districts of Tamil Nadu

Year	Basal stem rot (Disease Incidence %)				
	Coimbatore	Tirupur	Theni	Tirunelveli	Kanyakumari
2014-15	1.29	2.59	0.50	0.15	0.65
2015-16	0.96	1.40	0.11	0.23	0.93
2016-17	0.54	0.99	0.30	0.23	0.16
2017-18	0.25	1.00	0.25	0.11	0.73
2018-19	1.45	1.19	0.34	0.34	1.45

**Table.4** Incidence of coconut stem bleeding in different districts of Tamil Nadu

Year	Stem bleeding (Disease Incidence %)				
	Coimbatore	Tirupur	Theni	Tirunelveli	Kanyakumari
2014-15	<b>0.18</b>	<b>0.48</b>	<b>0.05</b>	<b>0.03</b>	<b>0.01</b>
2015-16	0.11	4.94	0.07	0.12	0.04
2016-17	0.07	0.16	0.06	0.04	0.17
2017-18	0.05	4.09	0.07	0.05	0.03
2018-19	0.26	0.30	0.14	0.08	0.79

**Table.5** State average for the incidence of major diseases of coconut

Year	Bud rot (%)	Basal stem rot (%)	Stem bleeding (%)	Leaf blight (PDI)	Leaf spot (pdi)	Root (wilt)
2014-15	0.13	1.03	0.15	8.56	2.55	5.64
2015-16	0.59	0.72	1.05	4.86	2.86	10.39
2016-17	0.09	0.44	0.10	5.38	3.92	7.96
2017-18	0.07	0.46	0.88	4.90	3.65	5.79
2018-19	0.61	0.95	0.28	7.23	6.25	8.24

**Fig.2** Symptoms of bud rot

a .Brown discolouration of heart leaf



b.Rotting of central shoot



c. White fungal growth on infected portion



d. Secondary infection by larva



**Fig.3** Symptoms of basal stem rot

a.Hanging of fronds



b.Bleeding patches on the base of the trunk



c.Formation of bracket



d.Decapitated stem



**Fig.4** Symptoms of stem bleeding



**Fig.5** Symptoms of leaf blight

Symptoms on leaf let



Symptoms on tree



**Fig.6** Symptoms of leaf spot



**Fig.7** Symptoms of leaf spot

Yellowing



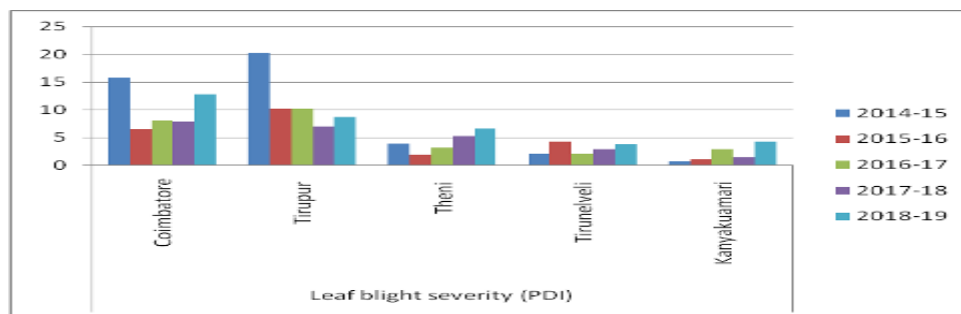
Flaccidity



Necrosis of leaves

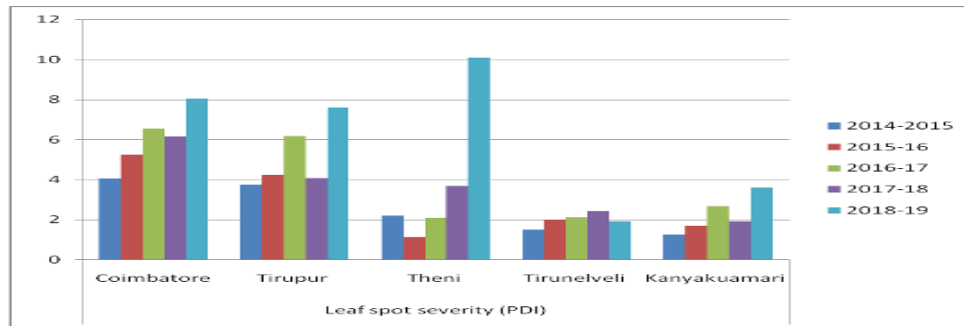


**Fig.8** Incidence of coconut leaf blight in different districts of Tamil Nadu

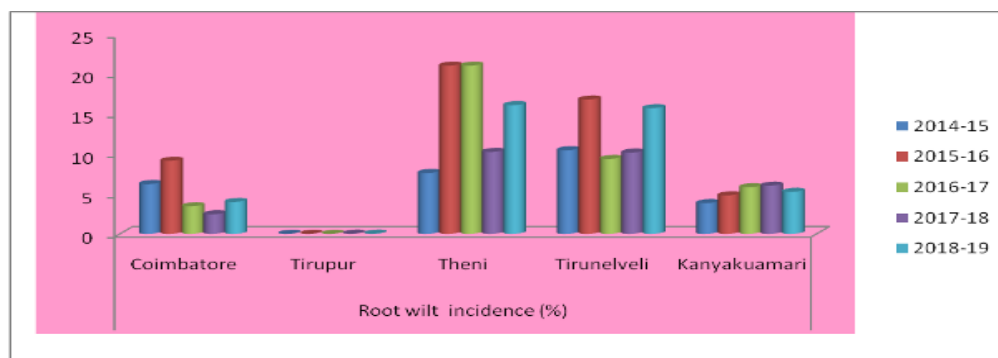




**Fig.9** Incidence of coconut leaf spot in different districts of Tamil Nadu



**Fig.10** Incidence of coconut root (wilt) in different districts of Tamil Nadu



### Leaf spot

The leaf spot caused by *Pestalotiopsis palmarum* produced greyish white spots with dark brown margins with a yellow halo surrounded by a greyish margin. Sever infection resulted in complete drying of fronds (Figure 6).

The leaf spot infection in coconut plantation was observed in all the surveyed villages and the severity of the was disease was more in dwarf varieties compared to tall varieties. The villages viz., Avalchinnampalayam, Angalakuruchi and Kalliyapuram of Coimbatore districts showed the highest disease incidence (Table.1) The district average of the disease in Coimbatore, Tirupur and Theni ranged from 4.05 – 8.05, 3.75 – 7.6 0 and 1.14 – 10.1 PDI respectively (Figure 9).The highest state average of 6.2 PDI was registered during 2018 – 19 and it was 2.55

PDI during 2014 – 15 (Table 5). The occurrence of leaf blight in coconut plantation has been earlier reported from Andaman Islands (Rao, 1988), USA (Florida) Jamaica (Farr *et al.*, 1989) Australia, Philippines and the Seychelles (Uchida and Aragaki, 1991).K. Athira. (2017) reported that the incidence of grey leaf blight is noticed in south farm. The most favorable condition for this pathogen is well drained soils or soils with potash deficiency, continuous rainy weather for 4-5 days and strong winds.

### Root (wilt)

The disease is incited by Candidatus Phytoplasma and transmitted through transmitted by plant hopper (*Proutista moesta*) and lace wing bug (*Stephanitis typicus*) The characteristic symptoms are flaccidity” of leaves i.e. they curve abnormally inwards, resembling the ribs of

mammals Wilting of leaves from middle whorl to outward. Shedding of buttons and immature nuts occur. The older roots cracks and blotches and cortex turns brownish black resulting in drying in flakes (Figure 7a,b,c).

In all the five years of survey the highest root (wilt) incidence was recorded in Gudalure village, Cumbum block, Theni district (Table 1) and other villages viz., Samiandipudur, Maninagaram and Angorepalayam village also found to have more conducive environment for root(wilt).In Tirunelveli district the severity of root(wilt) was high in villages viz., Panboli, Kanakkapadivalasu, Thenpotahi and Meenashipuram. The highest district average of root (wilt) incidence was recorded in Tirunelveli district during 2014-15 remaining four years of disease assessment the disease incidence was found to be more in Theni district (Figure10).The analysis of state average revealed that the mean incidence of root(wilt)was 5.65 per cent during 2014- 15 and 8.24 per cent during 2018 -19 (Table 5). The results are in line with findings of Ramjegathesh *et al.*, (2018) who found maximum incidence of the disease in Gudalur villageof Cumbum block in Theni district

This investigation could be useful to gain knowledge on occurrence and distribution of major diseases of coconut, to understand the spatial distribution of the disease and develop effective management strategy for diseases to prevent the lossess caused by the disease.

## References

- Bhaskaran, R., Ramanathan. T. 1984. Occurrence and spread of Thanjavur wilt disease of coconut. *Indian Coconut Journal*.15: 12–14.
- CDB.2018. Coconut Statistics 2017-18. Coconut Development Board, India <http://www.coconutboard.gov.in/presentation/statistics>
- Chandra Mohanan, R., Abraham, K., Mathew, M. T., Nair, P. 2008.Status of bud rot disease of coconut in Calicut district and remedial measures to manage the disease. Report submitted to ICAR, New Delhi. Central Plantation Crops Research Institute, Kasaragod. 46p.
- Chandran, K.P., Thamban, C., Prathibha, V.H.,Prathibha, P.S. 2017. Assessing status of pests and diseases with cluster approach - A case of coconut in Kasaragod district in northern Kerala. *Journal of Plantation Crops*, 2017, 45(1):33-42
- Farr, D. F., Bills, G. F., Chamuris, G. P., Rossman, A. Y. 1989.Fungi on Plants and Plant Products in the United States. St. Paul, Minnesota, USA, APS Press
- Henry Louis I. 2002. *Coconut – The Wonder Palm*, pp. 206–18.Hi-Tech Corporation Ramanupthoor, Nagercoil.
- Johnson, I., Meena, B.,Rajamanickam, K. 2014. Biological management of leaf blight disease of coconut using rhizosphere microbes. *J. Plantation Crops* (India).42: 364-369.
- Johnson,I., Ramjegathesh, R., Sheela, J., Shoba, N. and Maheshwarappa, H.P. 2017. Development of microbial consortia for the management of leaf blight disease of coconut. *Acta Phytopathol. Entomol. Hungarica*.52: 1-14.
- Nambiar, K.K.N., Sastry K. RC. 1988. Stem bleeding disease of coconut: reproduction of symptoms by inoculation with *Thielaviopsis paradoxa*. *Journal of Plantation Crops* 14:130-133.
- Nambiar, K.K.N., Rawther, T.S.S. 1993. Fungal disease of coconut in the world. In; Nair, M.K. et al.(Eds) *Advances in Coconut Research and Development*. Oxford and IBH. Publishing House., New Delhi pp 546-561.519–29
- Nambiar, K.K.N.1994. Diseases and disorders

- of coconuts. In: Advances in Horticulture
- Peter, P. K. and ChandraMohan, R. 2009. Bud rot disease of coconut – some points to ponder. *Indian Coconut J.* 51: 15-19.
- Ramjegathesh, R., Johnson, I., Srinivasan, T., Maheswarappa, H.P., Shoba, N. 2018. Occurrence and management of coconut root (wilt) disease in Tamil Nadu, India. *Phytopathogenic Mollicutes.* 8: 40-45.
- Ramjegathesh, R., Rajeswari, E., Venkatesan, K., MerinBabu., Maheswarappa H.P. 2019. Identification and confirmation of hotspot areas and management of root (wilt) disease in coconut. *Phytopathogenic Mollicutes.* 9 : 265 - 272.
- Rao, S. C. 1988. Leaf Spot disease of coconut incited by *Bipolaris curvata* (Bernad) Icorn. *Current Science* 57: 674-675
- Sharadraj K M and R.ChandraMohan. 2013. Status of Bud Rot Disease of Coconut in Endemic Areas of Southern States of India. *Global Journal of Applied Agricultural Research.* 3(2): 56-61
- Snehalatharani, A., Devappa, V., Rajappan, K., Maheswarappa H P. 2014a. Coconut basal stem rot is manageable. *Indian Horticulture* 59: 37–38.
- Snehalatharani, A., Maheswarappa. H.P., Devappa, V., Malhotra, S. 2016. Status of coconut basal stem rot disease in India – A review *Indian Journal of Agricultural Sciences.* 86 : 1519- 1529
- Srinivasulu, B., Aruna, K., Sabitha Doraisamy., Rao, D. V. R. 2001a. Occurrence and biocontrol of Ganoderma wilt disease of coconut in coastal agro ecosystem of AP. *Journal of Indian Society for Coastal Agriculture Research* 19: 191–195.
- Sulladmath, V.V., Shantappa., P.B. 1980. Aetiology of stem bleeding disease of coconut in semi-dry tract of Karnataka. *Current Research*, 9:73-75.
- Uchida, J. Y., Aragaki, M. 1991. *Bipolaris* and *Exserohilum* leaf spots. In: Chase AR, Broschat TK, eds. Diseases and Disorders of Ornamental Palms. St Paul, MN, USA: APS Press, 55.

**How to cite this article:**

Rajeswari, E., R. Ramjegathesh, V. Sivakumar, S. Praneetha, L. Pugalendhi and Maheswarappa, H. P. 2020. Occurrence and Distribution of Coconut Diseases in Tamil Nadu, India. *Int.J.Curr.Microbiol.App.Sci.* 9(10): 3859-3869.  
doi: <https://doi.org/10.20546/ijcmas.2020.910.444>